



AL NAKHLA TOWER

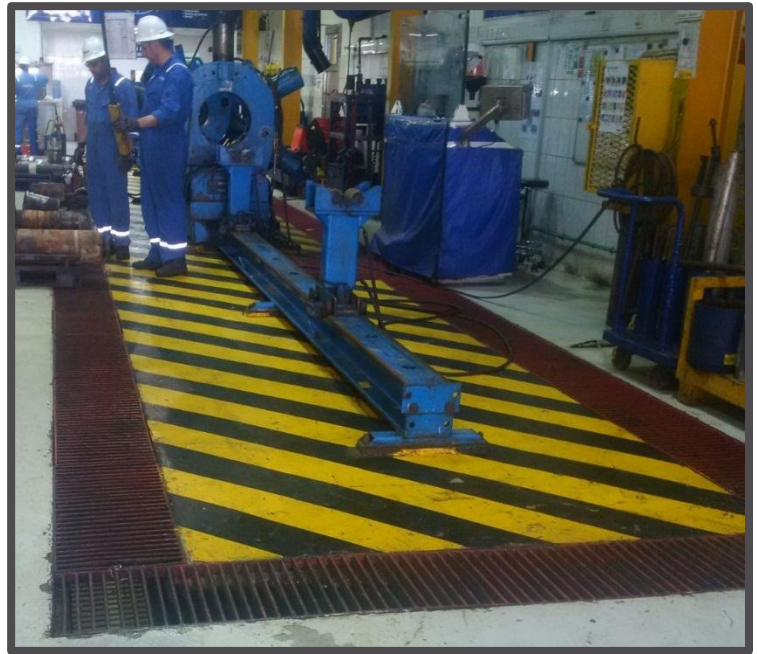
Success Through Perfection...



AL NAKHLA TOWER
GENERAL MAINTENANCE L.L.C

⚙️ INTRODUCTION

Since 1998 we are providing quality services for construction and contracting companies, property management firms and individual customers with various services related to civil, MEP, steel works, Interior fit out and joinery works. We always look forward to new challenges, innovation and expansion of our services. Our Certified professionals are experienced in General Construction, Facilities Annual Maintenance, Electrical & Mechanical Engineering Contracting and Steel Fabrications. We constantly challenge ourselves and our partners to find the best result in every project. Our clients receive a simplified, cost-saving, risk reducing & efficient service.



⚙️ QUALITY POLICY

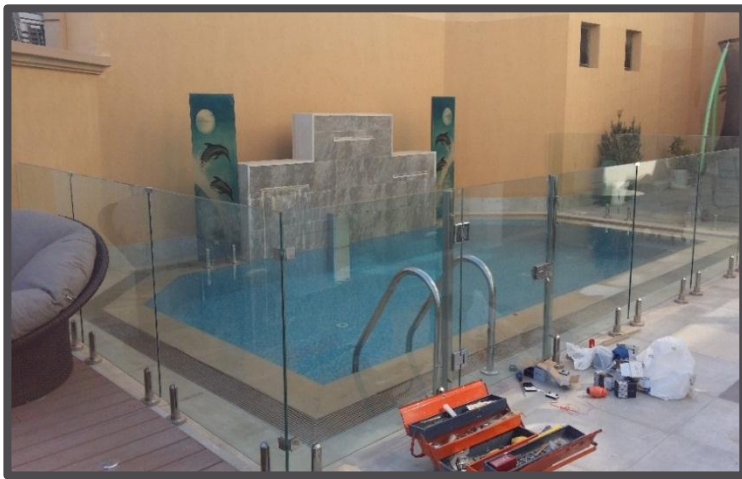
Customer satisfaction is uppermost in our business and hence to the end we are committed to our stringent quality management system. We always ensure that our fully-qualified technicians will offer you the highest quality, expert workmanship and speed of delivery that will assure you every step of the way. Our goal is to meet the expectations of every customer by providing total quality engineering, highest quality service, increased flexibility, and implementation at the most reasonable prices. It is our continual endeavor to maintain high moral ethics in all spheres of business and building on everlasting relationship by ensuring the quality of products.



⚙️ SAFETY POLICY

- ✓ We have well-defined health, safety & environment plans formulated taking into consideration the importance of health and safety of our workmen at their workplace.
- ✓ Our management policies ensure maximum efficiency of workmen and other players in the system while complying with the existing laws of the country.
- ✓ The safety aspects outlined in the safety plans are observed strictly ensuring negligible violations.
- ✓ We as a company, value Health, Safety & Environment very highly and equal importance is given to them as other business objectives.
- ✓ We seek the support and co-operation of all our workmen and other employees in implementation of the HSE plans and ensure highest degree of success.
- ✓ Adequate training is given to all the employees and good housekeeping is ingrained as a part of our culture.





– OUR SERVICES –

⚙️ CONSTRUCTION AND CIVIL WORKS

Apart from constructing towers and villas, we build warehouses and labor camps & floorings such as ceramic & marble flooring, parquet flooring etc. We even offer services for external interlock and paving works, Internal and external painting – Texture spray, Epoxy paint and multi-color painting, Partitions and False Ceilings Contracting.

⚙️ MEP WORKS

We do replacement of mechanical and electrical equipment, internal electrical circuits and distribution systems, lighting systems, Generators & UPS systems, MCB's and ELCB's, distribution boards and circuit boards etc. We fix all types of PVC, PPR, HDPE pipe fitting and laying of external pipeline and sanitary fittings as well(W/C, Wash-basin, Shower tray, Bath tub, Shower & Wash-basin mixer, etc.)

⚙️ STEEL AND ALUMINUM WORKS

We are using high-quality engineering standards to provide our customers in the design, fabrication and installation services on-time and on-budget. We undertake specialized engineering works like storage tanks, pipe line works, platforms & ladders, stack, steel post & Bollards manufacturing, sign frames, brackets, general and site welding works etc.

⚙️ HVAC WORKS

We do AMC and one time services of all kind of A.C unit and undertake all types of HVAC works, A.C Chiller maintenance works, Duct installation, chilled water piping, copper line repairs, replacement and changing of AC and associated equipment.

⚙️ INTERIOR FIT OUT & JOINERY WORKS

We undertake renovation and refurbishment of all types of Interior fit outs, Joinery works, wooden cladding, architectural woodworks, glass and gypsum partitions and false ceiling. We also supply and install all kinds of conference tables, reception counters, office desks, chairs, doors, kitchen cabinets etc.

AL NAKHLA TOWER GENERAL MAINTENANCE L.L.C

P.O. Box 40128, Mussafah 15, Abu Dhabi, U.A.E
Tel: +971 2 5542112, Fax: +971 2 5542114
Email: info@alnakhlatawer.com
www.alnakhlatawer.com



AL NAKHLA TOWER

